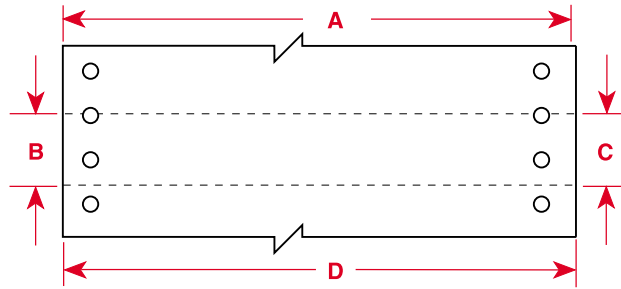


BradyTag® Labels Index by Size

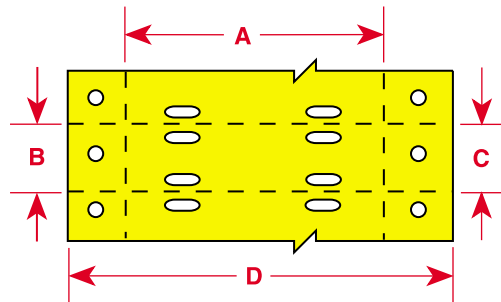
► COMPUTER-PRINTABLE TAGS (NON-ADHESIVE)



Part Number	Pieces Per Package	Material	Color	Labels Per Row	Label Width Inch (mm) A	Label Height Inch (mm) B	Vertical Repeat Inch (mm) C	Web Width Inch (mm) D
3.000" Label Width — 6 or 8 lines per inch								
BT-0530	500	B-841 Matte Polyester	White	1	3.000 (76.20)	0.500 (12.70)	0.500 (12.70)	3.000 (76.20)
BT-1030	500	B-841 Matte Polyester	White	1	3.000 (76.20)	1.000 (25.40)	1.000 (25.40)	3.000 (76.20)
BT-109-WT-3060-1	100	B-109 Polyethylene - 1 Across	White	1	3.000 (76.20)	6.000 (152.40)	6.000 (152.40)	4.000 (101.60)
BT-109-WT-3060-2	100	B-109 Polyethylene - 2 Across	White	2	3.000 (76.20)	6.000 (152.40)	6.000 (152.40)	4.000 (101.60)
BT-1530	500	B-841 Matte Polyester	White	1	3.000 (76.20)	1.500 (38.10)	1.500 (38.10)	3.000 (76.20)
BT-2030	500	B-841 Matte Polyester	White	1	3.000 (76.20)	2.000 (50.80)	2.000 (50.80)	3.000 (76.20)
3.500" Label Width — 6 or 8 lines per inch								
BT-2535	500	B-841 Matte Polyester	White	1	3.500 (88.90)	2.500 (63.50)	2.500 (63.50)	3.500 (88.90)
3.750" Label Width — 6 or 8 lines per inch								
BT-109-WT-2037	100	B-109 Polyethylene	White	1	3.750 (95.25)	2.000 (50.80)	2.000 (50.80)	4.750 (120.65)
4.750" Label Width — 6 or 8 lines per inch								
BT-109-WT-2547	100	B-109 Polyethylene	White	1	4.750 (120.65)	2.500 (63.50)	2.500 (63.50)	5.750 (146.05)

Note: Labels in chart are sorted in order by width, height, 3 digit material number (within part number), then die number (within part number).

► NOMEX® CABLE AND HARNESS MARKING (NON-ADHESIVE)



Part Number	Pieces Per Package	Material	Color	Labels Per Row	Holes Per Tag	Label Width Inch (mm) A	Label Height Inch (mm) B	Vertical Repeat Inch (mm) C	Web Width Inch (mm) D
2.000" Label Width — 6 or 8 lines per inch									
BT-508-WT-2050	2,500	B-508 Nomex®	White	1	4	2.000 (50.80)	0.500 (12.70)	0.500 (12.70)	3.000 (76.2)
BT-508-YL-2050	2,500	B-508 Nomex	Yellow	1	4	2.000 (50.80)	0.500 (12.70)	0.500 (12.70)	3.000 (76.2)
BT-508-WT-2075	2,500	B-508 Nomex	White	1	6	2.000 (50.80)	0.750 (19.05)	0.750 (19.05)	3.000 (76.2)
BT-508-YL-2075	2,500	B-508 Nomex	Yellow	1	6	2.000 (50.80)	0.750 (19.05)	0.750 (19.05)	3.000 (76.2)

Nomex® is a registered trademark of DuPont.

Note: Labels in chart are sorted in order by width, height, 3 digit material number (within part number), then die number (within part number).